



Cabber Gabber

Official Bulletin of Mobile Rock and Gem Society



Founded 1960

Clubhouse: 1324 Forest Dell Rd, off Moffett Rd, Mobile, Alabama 36618

www.mobilerockandgem.com

Member of the Southeast Federation of Mineralogical Societies

7pm
March 13, 2012

Vernon David
MRGS Show from a dealer's perspective and travels to Israel and Jordan

CLUBHOUSE
1324 Forest Dell



INSIDE THIS ISSUE :	
Meeting Announcement	1
Mineral Quiz	
Executive Board Minutes	2
General Meeting Minutes	
Birthdays	
Birthstone of the Month	3
Quiz Answers	
MRGS Scholarship	4
Bench Tips	
Dixie Mineral Field Trips	
MRGS Workshops	5
Paleozoic Field Trip Information	
Gem Finds Part 3	6
Surfin' with Neal	
Housekeeping Schedule	
Junior Rockhounds	
Upcoming MRGS Events	7
Upcoming Shows	
Other Scheduled Events	
Classifieds	8
Membership Form	
Club Information and Officers	9
Committee Chairs	
Calendar	10

The President's Pen Jim Darnell

Last month's meeting was great, so I was told. I was sorry to miss Dr. Axsmith's presentation on fossils found in Alabama.

This month is scholarship month. One scholarship will be awarded to one lucky qualified club member to either a William Holland School of Lapidary Arts or Wild Acres during the SFMS Federation weeks. The scholarship is open to all members who wish to participate and have paid their annual dues by January 31st, 2012. Last year's winner may not participate this year.



Good Luck!

It was really great to have so many new members approved for Sr. and Jr. membership in our club. We welcome and look forward to teaching the lapidary arts skills this year and the years to come.

Thank you, volunteers, for the next three months clubhouse clean up.

**Coming in MAY, our annual
Gem-O-Rama, it won't be long now!!!!**

**Coming in September, our annual
Auction. Start planning now.**

Jim Darnell

Mineral IQ Test by Anita Westlake from *Tips & Trips*, April 2011

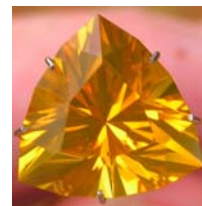
1. What is black mica called
2. What color streak does hematite leave on an unglazed porcelain tile?
3. What does pseudomorph mean?
4. What is the purple variety of quartz called?
5. Are diamonds found in meteorites?
6. In the mineral kingdom, what is a half-breed?
7. Johann Wolfgang von Goethe had what mineral named after him?
8. What mineral is 4 on the Mohs Hardness scale?
9. Which mineral is a natural magnet?
10. Which is the stalagmite and the stalactite?
11. What is another name for pyrite?
12. What is a "thin section"?
13. What's the difference between magma and lava?
14. What is silver/clear mica called?
15. Is amber a mineral?
16. What are aa and pahoehoe?
17. What's the difference between a meteorite and a meteor?
18. Do meteorites come from meteor showers?
19. Where in outer space do meteorites originate?
20. Which mineral has variable hardness?
21. What is the principle use of bauxite?
22. What is "quicksilver"?
23. Why is Rancho La Brea famous?
24. What common natural glass is still used in eye surgery?

Answers on p 3.

April Guest Speaker: **Bill Harbour**

Mobile Rock and Gem Society Member

Have you ever wondered how a rough gemstone is turned into a beautiful gem? Bill will open up the world of faceting at this meeting. He is an accomplished faceter has taught at William Holland School of Lapidary Arts in Young Harris, Georgia and teaches regularly at the MRGS clubhouse.



This is a 12mm Trillion cut Juniper Ridge Fire Opal (from Oregon) that I cut a couple of years ago.

Bill Harbour

MOBILE ROCK AND GEM SOCIETY EXECUTIVE BOARD MEETING FEBRUARY 2, 2012

The executive board of the Mobile Rock and Gem Society met at the clubhouse on February 2, 2012, at 7pm. Those attending the meeting were *Jim Patterson, Larry Landry, Cindy Harbour, Bill Harbour, Ben Davis, Jim Darnell, Michelle Peterson, John Hendrix, and Mary Daves*. *Jim Darnell* called the meeting to order. The minutes of last month's meeting were accepted as published in the *Cabber Gabber*. *Cindy Harbour* read the treasurer's report, and after discussion, it was approved.

Eleven new memberships were presented: They are *Anthony Young, David Hammer, Vernon and Tracie David, J. Lane and George Davis, Randall Brannon, Mark Cooper*, and juniors: *Michael Whatley, Madison Pickens, Ana Cazalas, Lindsey Thomas and Ryleigh Thomas*.



Michelle Peterson reported on the January junior meeting. July 10, 11, and 12, 2012 was selected for the junior rock-hound summer camp. She made a motion to obtain the Diamond Dan series for the juniors and to purchase the microscope - demonstrated by Don King at the last juniors meeting - that attaches to a computer. Motion passed. Agreement is to involve the juniors more in the 2012 show.

Larry Landry announced a free March field trip to Cumberland Plateau in Rose Creek, Tennessee for fossils. MRGS will host a Dixie Mineral Council field trip to Brilliant, Alabama for Brilliant crystallized wood on April 14. *Larry Landry* announced a Saturday workshop, February 18 from 9am – 1pm.

John Hendrix reported he mailed stamps to the SFMS scholarship fund. *Mary Daves* announced that she has lapidary-related DVD's ready for check out and would like to have more. Anyone who knows where to obtain DVD's related to the MRGS hobby, lapidary, fossils, minerals, etc., please let her know.

Bill Harbour reported the faceting class is going nicely. Junior member, *Kristen Hinton*, who showed her first stone at the December meeting, is working on her second one. *John Clinard* finished his first, and *Ainsley McNeely* is working on her third stone.

Jim Patterson, show chairman, reported that 2011 show security, trouble with the electricity, and leaks at the fairgrounds need to be remedied for 2012.

The board discussed replacing the clubhouse side doors and has inquired about cost. One of the problems is that the cement by the doors is slanting toward them bringing rain-water near the doors. Discussion ensued concerning the remedy.

Ben Davis announced that he might not be available to mail out the March *Cabber Gabbers*. The editor will do so, if needed.

There being no further business, the meeting was adjourned.

Respectfully submitted,

Mary Daves, Secretary

MOBILE ROCK AND GEM SOCIETY MEETING FEBRUARY 14, 2012

The monthly meeting of the Mobile Rock and Gem Society was held at the clubhouse at 7pm, February 14, 2012. Vice-president *John Hendrix* called the meeting to order. The Pledge of Allegiance was said. *Phil Kaiser* sold split-the-pot tickets. *John* introduced *Dr Axsmith* who had a program on plant and leaf fossils, many of which are found in Alabama.

After the program, the regular meeting continued. The minutes of last month's meeting were approved as published in the *Cabber Gabber*. *Cindy Harbour* read the treasurer's report, and it was accepted as read.

New membership applications *Anthony Young, David Hammer, Vernon & Tracie David, L. Jane and George Davis, Randall Brannon, Mark Cooper* and junior members *Michael Whatley, Madison Pickens, Ana Cazalas, Lindsey Thomas, and Ryleigh Thomas* were approved.

Michelle Peterson reported that 21 juniors studied the ingredients in toothpaste and made toothpaste out of the available ingredients. Junior members are planning a field trip and a summer rock camp.



We had visitors, *Bill and Linda Smith* and one whose name I missed.

Larry Landry reported a "fee" field trip for large quartz crystals at Burgin Quartz Mine in Norwood, North Carolina. on Saturday, February 25 Information is in the February *Cabber Gabber*. There is a trip to Rose Creek, Cumberland Plateau, Tennessee on March 24 for fern and tree bark fossils.

Larry reported that the field trip in April to Brilliant, Alabama is called off. *Larry* is planning a trip on April 14 to Miller Mt. near Hot Springs, Arkansas. More later.

Bill Harbour reported on the faceting class. *John Clinard, Kristen Hinton, and Ainsley McNeely* are working on their 2nd and 3rd stones.

Larry Landry will hold a workshop on Saturday, February 18. *Neal Hazen* will have one Friday, February 24, 2012.

John Hendrix reported he has sent a box of stamps to the SFMS scholarship fund. There will be a scholarship drawing at the MRGS March meeting for a William Holland or Wild Acres SFMS workshop.

Jim Patterson reported he has been unable to meet with the fairgrounds to arrange for the MRGS 2012 show. Thanks to *Jim* for the clubhouse clean-up this month.

Gem-O-Rama is May 12 and the annual auction is September 15.

It was noted that one exterior security light is not coming on. This will be checked.

Liz Kaiser won the split-the-pot. Door prizes were won by *Ben Childress, Al Gosse, Cindy Harbour, Michelle Peterson,*

Cont'd on page 3

Happy March Birthday!



+ Lifetime member

Name missing from the birthday list? Let the editor know.

- Sean Baxter
- Catherine Betancourt
- Rodney Boone
- Mickey Boyer+
- Grady Dunn+
- Patt Gilley
- Tommy Harbour
- Connie King
- Kimberly Lambright
- Richard Micelli
- Brent Sells
- Gloria Wier
- Karen Williamson

The two birthstones for March are aquamarine and bloodstone.

A q u a m a r i n e

The name *aquamarine* is derived from the Latin word *aqua*, meaning water, and *marina*, meaning *the sea*.... . Aquamarine is most often light in tone and ranges from greenish blue to blue-green; the color usually is more intense in larger stones. This gemstone is mined mainly in Brazil, but also is found in Nigeria, Madagascar, Zambia, Pakistan, and Mozambique. <http://www.americangemsociety.org/march-birthstones>



<http://www.gemstone.org/>

- CHEMISTRY** Be₃Al₂Si₆O₁₈ + Fe
- CRYSTALLOGRAPHY** Hexagonal
- REFRACTIVE INDEX** 1.567 - 1.590
- HARDNESS** 7.5 - 8
- SPECIFIC GRAVITY** 2.66 - 2.80
- CLEAVAGE** Indistinct
- HEAT SENSITIVE** No
- WEARABILITY** Excellent
- SPECIAL CARE INSTRUCTIONS** None
- ENHANCEMENTS** May be heat treated to remove green tint. Very common, undetectable.

Used by permission: <http://www.gemsociety.org/info/gems/Aquamarine.htm>

B l o o d s t o n e

The second birthstone for March is *bloodstone*, a dark-green jasper flecked with vivid red spots of iron oxide.... It is sometimes called the *martyr's stone* as legend tells that it was created when drops of Christ's blood stained some jasper at the foot of the cross. Generally found embedded in rocks or in riverbeds as pebbles, primary sources for this stone are India, Brazil, and Australia.



<http://www.all-that-gifts.com/>

<http://www.americangemsociety.org/march-birthstones>

Mineral Test Answers from page 1

1. Biotite
2. Red to Brownish Red
3. False-Form
4. Amethyst
5. Yes, most notably in Canyon Diablo
6. A specimen of half silver and half copper
7. Goethite
8. Fluorite
9. Magnetite
10. Stalagmite grows up mighty from the ground. Stalactites have to hang on tight to drip from the ceiling
11. Fool's Gold
12. A wafer thin slice of a mineral or meteorite that is virtually transparent. It is placed in a polarized microscope to identify individual minerals and their crystal structures.
13. Magma forms inside the volcanic chamber lava flows outside the chamber and is visible to the eye.
14. Muscovite
15. No it does not pass one of the five characteristics of a mineral most specifically "inorganic"
16. Types of lava. Aa is named for the sound one makes when walking upon its rough surface pahoehoe is ropy lava.
17. A meteorite is a rock from space that makes it to the ground. A meteor is the LIGHT you see when the meteoroid hits the earth's atmosphere and briefly catches fire.
18. No-Meteor showers are cyclical and are the result of comet trails intersecting with earth's orbit.
19. The asteroid Belt between Mars and Jupiter
20. Kyanite
21. Aluminum
22. Mercury (the liquid metal that used to be in thermometers)
23. The La Brea Tar Pits where hundreds of animals were found preserved in tar
24. obsidian

How did you do?

Minutes from page 2.

Neal Hazen, Henry Knight, Charles Darling (collected by his wife, Jill), Liz Knight, Jim Patterson, Robert Gosse, Helen Lombard, Bill Harbour, Mary Daves and Randall Brannon.

SHOW AND TELL *Mary Daves*: book about petrified wood and petrified wood she bought at our silent auction, which she polished. *Larry Landry*: Montana dry head agate, which he polished. *Don King*: showed photos taken with a microscope camera of opal he polished. *Gary Lombard*: flint with fossilized plant specimens from North Dakota and agate from the Oregon River that the Indians used for trading material. *Ben Childress*: limestone fossils from Clarke County. *Randall Brannon*: agate, a knife of Damascus steel, and a N. C. ruby. *Phil Kaiser* told about visiting a crystal museum in Daytona Beach, Florida.

There being no further business the meeting was adjourned to enjoy refreshments and finish our silent auction.

Respectfully submitted, *Mary Daves*, Secretary



Dixie Mineral Field Trips

Website for DMC

<http://www.gamineral.org/dmc.htm>



The Southeast Federation of Mineralogical Societies, Inc

The Friendly Federation - Founded in 1976 to serve.
DMC Program of the SFMS Field Trip Committee
 Copyright © All rights reserved.

An Official Field Trip of **Mobile Rock and Gem Society** *Larry Landry, MRGS FT coordinator.*

An Official Field Trip of **Tennessee Valley Rock and Mineral Club (Chattanooga, TN)(HOST)**

9:00 AM CST Saturday, March 24, 2012
 Rose Creek, Cumberland Plateau, Gruntli, TN

Cost: Free Time: Saturday, March 24, 2012 9:00 AM CDT

What to find: large fern, tree bark fossils of the Mississippian and Pennsylvanian eras in black and red slate.

What to bring: gloves, buckets, pry bar, rock hammer, change of clothes (it will be wet), newspaper to wrap fossils, drink and food. There are no food services.

Directions: Meet in Hardees parking lot in Monteagle, Tn. on I-24. Top of Monteagle, exit #134. Will leave for the site promptly at 9:20 Central Time. Don't be late . . .
 For further information call **Dennis Nixson** ([423\) 702-1373](tel:4237021373))

An Official Field Trip of the **Mobile Rock and Gem Society (Mobile, AL)(HOST)**

Coleman's Miller Mountain Mine, Jessieville, AR

FEE SITE: Adults -discounted price \$7.50 each day paid at the mine. Children nine (9) and under free.

Sign in starting at 8am CT Saturday, April 14, 2012

WHERE: Coleman's Miller Mountain Mine, 358 Big Hole Road, Jessieville, Arkansas 71949.

www.bluemooncrystals.com

COLLECTING: You will find clear and white quartz crystal and you keep all you find.

Backhoe digs, exposes new material. If rain is predicted for Saturday, they will dig plenty of new material on Friday.

Dixie Mineral Council (DMC) Program / SFMS Field Trip purpose:
 To collect field trip information from its member societies; schedule and coordinate field trip dates; disseminate field trip information to all member clubs so that each member society may publish this information as one of their "official" scheduled field trips.

Please reply by e-mail to: dmc@gamineral.org
 World Wide Web site for the DMC is: <http://www.gamineral.org/>

Paleozoic Field Trip Information

[alabamapaleo Yahoo! Group](#)

Union Chapel Mine Steven C. Minkin Paleozoic Footprint Site *Usually 8am-noon 2nd Sat monthly*

NOTICE!! Get clear details before taking this field trip.
 MRGS Contact: **Glenn Wimpee**
pawpawtiger@centurytel.net

APS usually meets at Wal-Mart, Hwy 78 in Sumiton, AL.

Supplies: Bring water bottle, hammer & chisel, cardboard flats, paper for wrapping specimens, toilet paper (multi-purpose paper).



Vertebrate Trackway from Walker Co. Alabama <http://bama.ua.edu/~rbuta/monograph/>

Cabbing and Lapidary Workshops

FRIDAY, March 16, 2012 6:30 pm - 9:30 pm

Neal Hazen (251) 786-1184

SATURDAY, March 17, 9 am -1 pm

Larry Landry (251) 653-8459, Jim Darnell (Opals)

Faceting Classes

7pm on first and third **MONDAYS**

Bill Harbour (251) 666-2434) or

Jerry Shirey (251)786-4777

CHECK WITH INSTRUCTORS TO VERIFY DATES.

Basic Wire Work Class

TUESDAY, March 13, 2012

1:30-5:00 pm prior to the regular meeting.

Bonita L . Harris (251) 865-9157

MRGS Library

Mary Daves, librarian



Videos, books, magazines related to lapidary arts are available for check out.

Gem Show Finds (Part 3 of 3) Benjamin Childress, MRGS member

Oddest purchase I made at the Gem Show was of a simple looking mace-shaped concretion. At first sight of the concretion, I thought it was a trace fossil like that of a borrow and living chamber of a crab, which is the reasoning behind my purchase seeing how I'm into fossil collecting. But, then I did some fact finding on its true nature. Turns out they are strange geological formations, "sand spikes", commonly found in the Imperial Valley region of California in association to the old Lake Cahuilla (Blake Sea) shoreline, which is a prominent physiographic feature of the region. It is believed that the unusual arrangement and concentration of these large numbers of concretions have been brought about through the actions of the almost landlocked Blake Sea with the Pacific Ocean during Pleistocene times.

What are these sand spikes? They are calcite concretions that formed with a ball-like end composed of the ordinary beach sand materials cemented together with radiate calcite grouped into spherical structures generally united about a common center and with a "spike" of the same composition of calcite crystals grouped radially about a longitudinal, central axis. Today the sand spikes from the textbook site at the foot of the Mount Signal can only be found in museums and private collections due to excessive collecting throughout the early 20th century. The specimen I had purchased was collected from that era and still has the original specimen label attached to the spike, "Concretion, Cannel 19th, Imperial Valley, California, 1949."

Odd things do make great art. Allan McCollum a contemporary American artist who has spent over forty years exploring how objects achieve public and personal meaning in a world constituted in mass production, focused most recently on collaboration with small community historical society museums in different parts of the world. In 1999-2000 he collaborated with the Imperial Valley Historical Society Pioneers Museum in Imperial, California to reproduce souvenir copies and large models of their local mountain, Mount Signal, and the unique 'Sand Spike' sand concretions found at its base. His museum exhibition, "Mount Signal and Its Sand Spikes", included plaster replicas of a sand spike from Mount Signal, one concrete bench-sized enlargement of a sand spike, and paintings of Mount Signal by local artists. The large sand spike replica is permanently installed as an outdoor sculpture and "roadside attraction" on the grounds of the Pioneers Museum.

Other great buys at the Gem Show: Two large pyritized brachiopods. One brachiopod is a *Paraspirifer* bownockeri that has a companion shell to which its pedicle (holdfast stalk) would have been attached when it was living on the prehistoric sea floor. The other brachiopod is a species of *Cyrtina* in a matrix containing pyritized brachiopods, brachiopod fragments, and a branched bryozoan colony from the Silica Formation (Givetian Stage, upper Middle Devonian) from a quarry in the Sylvania area of Lucas County, northwestern Ohio, USA. Also, I purchased several small pyritized, Jurassic age ammonites from Ulyanovsk, Volga River, Russia.
Continued on page 7.



Surfin' With Neal by Neal Hazen



Aloha, again, Dudes! As you dutifully patch the holes punched in your wet suits by the rocks, cast an eye across this month's tales from the Web.

WARNING! (Or, at least, CAUTION!)

Next time you spruce up the old rock saw, pay close attention to the paint stripper and degreaser you use. If it contains methylene chloride, it could be deadly. 13 bathtub refinishers are testament to this ingredient's toxic qualities. You need to go to: <http://www.dailymail.co.uk/news/article-2106140/Paint-stripper-linked-13-deaths.html> and check this out.

Petroleum refiners commonly add cerium oxide nanoparticles to diesel fuel to increase mileage, and reduce particle emissions. A study done in association with this usage serves as a warning to us lapidaries, as well. It has now been shown that inhaled cerium oxide particles can pass into the bloodstream and lodge in the liver. Large enough levels of ceria particles in the liver will damage that vital organ. Read more at: <http://www.sciencedaily.com/releases/2011/11/111117141157.htm>, and remember the old rule of thumb – Always keep your polish wet.

Now back to the just interesting stuff

Australians are used to superlatives. They have a lot to be proud of – besides beautiful beaches and wonderful surf. Now, there's something new: a 12.76 carat pink diamond! Named the "Argyle Pink Jubilee", this beauty is Australia's largest, to date. Pink diamonds are so rare that the famous auction house, Christie's, has sold only 18 of them over 10 carats in size over the past 244 years. See this fabulous stone, and some of the Kimberlite mined with it, at: <http://www.abc.net.au/news/2012-02-21/big-pink-kimberley-diamond/3843000>.

Now, to a very different type of crystal. Now this is one you won't find in your Audubon Guide. Don't bother checking Sinkankis, either. Nope, you won't find them on E-Bay, either. I'm talking "Time Crystals", here. As I read it, an object at its lowest energy state can theoretically exhibit periodic motion. It's this type of motion through time that gives this object a "crystal" nature. No, I don't understand all I read about time crystals, but it also seems such crystals come pretty close to exhibiting "perpetual motion", as well. Look, don't take my word for it. Read about time crystals here: <http://www.physorg.com/news/2012-02-crystals-perpetual-motion-machines.html>.

It's just natural that folks like you and me are interested in the history of the Earth. When researching the literature via the internet, you can come across presentations of the Geologic Time Scale that have a lot of errors. Here's a place you can go to get the most updated and accurate presentation: <http://us.mg6.mail.yahoo.com/neo/launch?.rand=0dli1a7e7on46>.

Well, that's all I have time to share with you this month. But I'll be back next month with more. Oh, so much more!

Housekeeping Schedule for Mobile Rock and Gem Society Clubhouse



March 2012:	Don King
April 2012:	Bill and Cindy Harbour
May 2012:	Neal Hazen
June 2012:	_____
July 2012:	Ed and Bonita Harris

August 2012: _____

New volunteers should join one of the scheduled teams and see what needs to be done. Clean up is always the weekend before our general meeting.

Clean-up teams can contact *Jim Darnell*, if they cannot clean as scheduled. Thank you all for helping!

Junior Rockhounds

Saturday, March 24, 2012 9-noon
Michelle Peterson mysticks@hotmail.com

Activities: AFMS Badge
http://www.amfed.org/fra/fra_badge.htm

JUNIOR MEETING FEBRUARY 25, 2012

The junior meeting of the Mobile Rock and Gem Society was held at the clubhouse from 9am until noon on February 27, 2012. Those attending the meeting were *Caitly Bailey, Leah Bates, Sean Baxter, Ana Cazalas, Kristen Hinton, Carter Matthews, Rusty and Sean Peterson, Hunter Robbins, Rachael Smith, Perri Troup, Evan and Michael Whatley* and guests, *Journee and Julius*.

Mrs. Peterson did a show and tell about what they can learn in the workshop. *Sean Baxter and Sean Peterson* polished cabs.

The younger junior members split up at three tables and learned how to make wire and bead trees, decorate barrettes with beads and make bead bracelets. *Kristen Hinton* taught the bracelets. *Jill Darling* taught the trees, and *Michelle Peterson* taught the barrettes. After a break for goodies and drinks, the juniors changed to do something else including making gem identification cards with real gems. This was taught by *Mrs. Bailey*.

When they finished this they had their silent auction.

Mary Daves



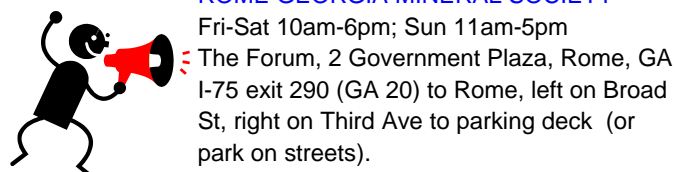
Upcoming MRGS Events

John Hendrix, program chairman

April: *Bill Harbour* Faceting
May: *Read Stowe*
Gem-O-Rama
June: *Kim Cochran*
July: _____ August: _____
September: **Annual Auction**

Upcoming Mineral, Gem, and Jewelry Shows

March 16-18, 2012 Valley and Ridge Gem and Mineral Show
ROME GEORGIA MINERAL SOCIETY



Fri-Sat 10am-6pm; Sun 11am-5pm
The Forum, 2 Government Plaza, Rome, GA
I-75 exit 290 (GA 20) to Rome, left on Broad St, right on Third Ave to parking deck (or park on streets).

Over 15 dealers; mineral and fossil identification, exhibits, and demonstrations.

Show contact: *Jose Santamaria* 770.606.5700 ext 401
Email contact: rogams.show@gmail.com

OTHER SCHEDULED EVENTS

OCEAN SPRINGS, MS

THE MISSISSIPPI GULF COAST GEM AND
MINERAL SOCIETY, INC.
CLUB MEETINGS - 2:30 PM
2ND SUNDAY OF THE MONTH
(EXCEPT MAY AND NOVEMBER)
Ocean Springs Library
Dewey Avenue
<http://www.mgcgms.org/>

GULFPORT, MS

HARRISON COUNTY GEM AND MINERAL SOCIETY, INC.
WORKSHOP AND MEETING
3RD SATURDAY OF EACH MONTH
WWW.GULFPORTGEMS.ORG

Concluded from page 6

Thanks to Neal Hazen, I finally have a complete crinoid crown and several weathered crinoids with attached stem sections on a large matrix piece. I just had to have it for my collection. I think the crinoids are *Glyptocrinus dyeri*, an Upper Ordovician crinoid from Ohio.

Lastly, I purchased a mineral encrusted petrified wood from Arizona (from what I was told) and some books on fossil hunting and rock hounding. Looking forward to 2012's Gem Show... (*Sources not available*)

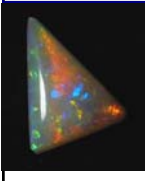
Classifieds

Mobile Rock and Gem Society Yahoo Group
<http://groups.yahoo.com/group/mobilerockandgemsociety>

Email: mobilerockandgemsociety@yahoogroups.com.

You must be a member to post. If you have any question, please contact *Bill Harbour* at bcharbour78@yahoo.com.

Windsong Opal Imports



Jim Darnell
jamezrobdarn@bellsouth.net

Member: MRGS & AOS
 (228)-875-2310

Specializing
 in: Opal
 rough and
 finished
 stones

Opal Beads and more

Information Brochure for NEW Members

The MRGS new members club brochure explains all the society's 'happenings and doings'. These brochures are available at the clubhouse.



Wear your club badge. Don't have one?
 See Cindy Harbour, and she'll be glad to order you one.

Canceled Stamps



The club sends canceled stamps to the Southeast Federation for the scholarship fundraiser. Those who bring the stamps are eligible for a scholarship drawing to a SFMS lapidary workshop.

Most stamps are now "forever" stamps, but they are still requested, except for canceled liberty bell stamps.



Please do not cut the stamps; leave some room around the stamps and do not cut the perforations!

BRING YOUR STAMPS EACH MONTH



Membership cards are available.
 See *Jim Darnell*.

MOBILE ROCK AND GEM SOCIETY MEMBERSHIP APPLICATION



Applicant's Name _____ Today's Date _____

Mailing Address _____ City _____ State _____ Zip _____

Telephone Home (____) _____ - _____ Work # (____) _____ - _____

E-mail _____

I (we) am (are) applying for:

- ___ Husband & Wife Membership \$25.00 per year (Jan. 1- Dec. 31.) includes MRGS *Cabber Gabber* newsletter
- ___ Individual Adult Membership \$15.00 per year (Jan. 1- Dec. 31.) includes MRGS *Cabber Gabber* newsletter
- ___ Family Membership (Husband & Wife) \$25.00 /each Junior \$3.00 includes MRGS *Cabber Gabber* newsletter
- ___ Junior Membership (ages 9-17) \$5.00 per year (Jan. 1- Dec. 31.) **no** MRGS *Cabber Gabber*

Applicant's Signature _____ Birth month _____

Spouse's Signature _____ Birth month _____

Sponsor _____ Date _____

Make checks payable to:
Mobile Rock and Gem Society
 Mail to: MRGS Treasurer
 1324 Forest Dell
 Mobile, AL 36618

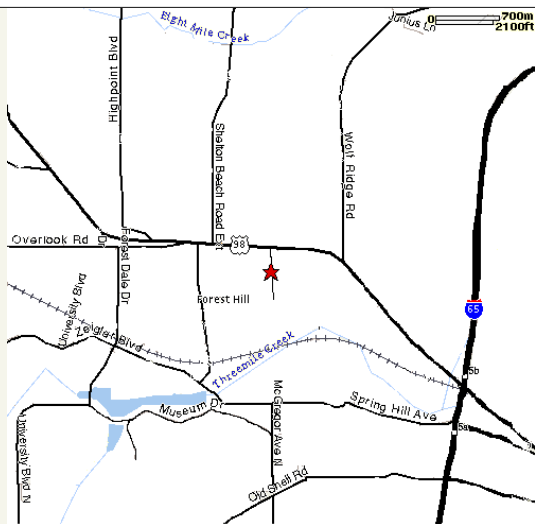


MOBILE ROCK and GEM SOCIETY

Annual dues are from January 1– December 31

Clubhouse: 1324 Forest Dell Rd, off Moffett Rd, Mobile, AL

Meeting Date: 2nd Tuesday of every month at 7pm



PURPOSE OF MOBILE ROCK and GEM SOCIETY

- A. Stimulate interest in the earth sciences including lapidary arts, mineralogy, petrology, paleontology, geology, and other related fields and to encourage the study therein.
- B. Sponsor an educational program to increase the knowledge of members and the general public regarding the properties, identification and evaluation of rocks, minerals, fossils and other related subjects by holding monthly meetings with lectures by qualified experts or lapidary-related demonstrations.
- C. Sponsor field trips to collect and study various kinds of rocks, fossils, and minerals.
- D. Maintain a library of reference materials on lapidary arts, mineralogy, petrology, paleontology, geology, and other related fields.
- E. Display gems, fossils, mineral and lapidary specimens at the Mobile Museum of Art, Greater Gulf States Fair, area universities and other venues when invited.
- F. Conduct an annual show for the general public at a nominal fee where members and nonmembers demonstrate lapidary techniques and display collections of gems, fossils, and minerals.
- G. Conduct an annual Gem-O-Rama where members and nonmembers may swap, trade sell, purchase or observe gem, fossil, and mineral specimens and other related material.

A Junior Member is a member age 7-17 years.
 They do not have the right to vote or hold office but shall have all powers and privileges conferred by these By-Laws.
 A Senior Member is a member 18 years or older.
 They shall have all the powers and privileges conferred by these By-Laws including the right to vote and hold office.

Officers and Board of Directors for 2012

President: Jim Darnell
 251 633-5875
 6700 Wall St Apartment 7E
 Mobile, AL 36695
 jamezrobdarn@bellsouth.net

Vice-President: John Hendrix
 251 866-7553
 17925 Celeste Road
 Citronelle, AL 36522
 johneu64@bellsouth.net

Treasurer: Cindy Harbour
 251 666-2484
 1864 Wildwood Place
 Mobile, AL 36609
 bcharbour78@yahoo.com

Secretary: Mary Daves
 251 928-9335
 120 Pier Ave
 Fairhope, AL 36532-1230
 mldaves44@hotmail.com

Editor: *Cabber Gabber*.
 Bonita Harris 251 865-9157
 12520 Jeff Hamilton Rd
 Mobile, AL 36695
 bonita-harris@mchsi.com

Directors: *One required for quorum at Executive Board meetings*
 Phil Kaiser.....251-479-7447
 kaiserpw@att.net

Bill Harbour..... 251 666-2434
 bcharbour78@yahoo.com

Ben Davis251 649-6358
 bluefox2@att.net

Additional Board Members
 *Field Trip Chairman: Larry Landry
 251 653-8459
 maryloulandry@aol.com

Show Chairman: Jim Patterson
 jimandde@mobis.com
 251-510-8527

Show Dealer Chairman:
 Rodney Boone.....251 633-5551
 rodwboone@yahoo.com

Youth Activities Chair:
 Michelle Peterson
 mysticks@hotmail.com

COMMITTEES

Cancelled Stamp Chair: John Hendrix.....251 866-7553
Clubhouse: Gerald Jones.....251-344-8784

Librarian: Mary Louise Davesmldaves44@hotmail.com
Nametags: \$7.00 each in advance. *See Cindy Harbour.*

Phone Committee: Nick & Genie Lukes.....251 479-8912

Shop Chairman: Larry Landry.....251 653-8459

Special Events & Refreshment Committee:Selena and Lotus Buccola
 251-377-0059

Stamps for Scholarships: John Hendrix 251 866-7553
 joh-

nau64@bellsouth.net
Sunshine Committee: *If you know of a member who is sick or hospitalized, please contact* Teresa Boone.....251 633-5551 or

Anna Marie Brown.....251 432-0566

Tee shirts and caps: Roger Crow251 725-1853
 lemans78@comcast.net

Webmaster: Jenny Thorman jenniferthorman@aol.com
Southeast Federation of Mineralogical Societies
Dixie Mineral Council: <http://www.amfed.org/sfms/index.html>

William Holland School of Lapidary Arts and Wildacres
<http://www.amfed.org/sfms/.pdf>

Copyright 2012 Mobile Rock and Gem Society *Cabber Gabber*. All rights reserved. Except for items that are specifically copyrighted by their authors, all materials in this bulletin may be freely copied. Please give credit to *Cabber Gabber*. Unless otherwise credited, articles are by the editor.

Articles are due by the 20th of each month.

Mobile Rock and Gem Society

www.mobilerockandgem.com
bonitaharris@mchsi.com

Cabber Gabber Editor: Bonita L. Harris
1324 Forest Dell Rd
Mobile, AL 36618-1726

**ADDRESS CORRECTION REQUESTED
PLEASE FORWARD**

March 13, 2012 - Vernon David
MRGS Show from dealer perspective
and travels to Israel and Jordan



Aquamarine / Bloodstone



March 2012

Sunday	Monday	Tuesday	Wednesday	Thursday	Friday	Saturday
				1 7pm <i>Executive Board Mtg</i>	2	3.
4	5 7pm <i>Faceting Class</i>	6	7	8	9	10 <i>Paleozoic FT</i> Contact Glenn Wimpee see p 7.
11	12.	13 7pm <i>General Mtg</i> : Vernon David 1:30-5:00pm <i>Wirewrap Workshop</i>	14	15	16 6:30 -9:30 pm <i>Cabbing Workshop</i>	17 9am-1pm <i>Cabbing & Opal Workshop</i>
18	19 7pm <i>Faceting Class</i>	20	21	22	23	24 <i>DM FT p 5</i> 9-noon <i>Junior Rockhounds</i>
25	26	27	28	29	30	31

HAPPY ST. PATRICK'S DAY